



CASE STUDY 11

## Gasholders, London

Gasholders London is a remarkable combination of cutting-edge engineering and contemporary design. There are 145 distinctive apartments built within a refurbished triplet of Grade II listed Victorian cast-iron gasholders, used as a framing device for a luxury apartment development, next to the Regent's Canal, at the heart of Kings Cross, London N1C.

Landmark Lifts' involvement with the project included the installation of two stylish, hydraulic vehicle lifts and a goods/passenger lift for the movement of bicycles and refuse bins, within the redevelopment of this architectural landmark structure.

### The Professional Team



Architects:



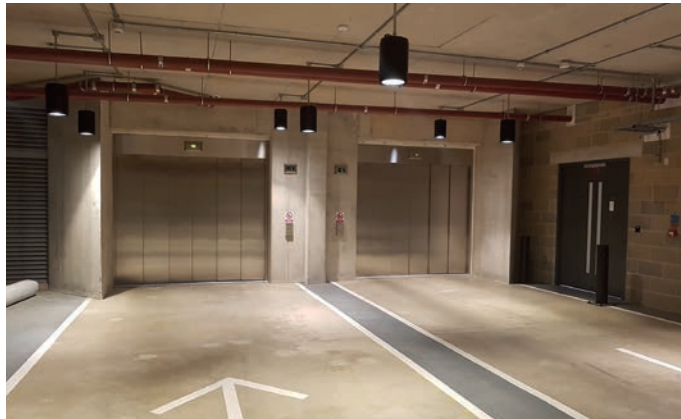
Installation:

Landmark Lifts 

## Project Scope

The vehicle lift installations on this project were specified to ensure car parking and storage facilities could be offered for selected apartments. The use of Landmark's hydraulic vehicle lifts, with direct and easy access, allowed the car parking and storage facilities to be positioned underground within the basement of the structure, with each of the vehicle lifts offering a 4920kg capacity and the goods/passenger lift a 2550kg capacity.

The technology behind the hydraulic vehicle lifts uses full height infra-red beams to allow accurate positioning of a car or van within the lift floor area, through traffic light positioning signals.



## Aesthetics

Part of the architect's vision was that the building should appear alive and be responsive, as the residents' access and move the perforated screens peppered across the façade for privacy and protection from the sun.

To compliment this contemporary architectural design and Victorian engineering, Landmark Lifts supplied and installed vehicle lifts with external doors manufactured in similarly eye-catching shimmering warm metals, produced from stainless steel with a satin finish.

The interior design and finishing of the vehicle and goods/passenger lifts were achieved through bespoke choices for the lighting, floors and walls to fit with the design specification of this iconic refurbishment.



## Conclusion

The development of Gasholders, London included scrapping the original internal tanks, removal and refurbishment of the external steel structures, which were then repositioned around the new residential structure once the apartments were built, resulting in an extraordinary and striking feat of engineering. This is a project Landmark Lifts is proud to have been involved with and provides us a flagship installation of vehicle and goods/passenger lifts to showcase both our ability to meet specification and technical guidance to ensure the success of a project.

## Contact

Please contact Nick Taylor at Landmark Lifts for a free quotation or more information about our full range of lifts to meet any of your future project requirements.

**Landmark Lifts** 

+44 (0)1604 671007 [info@landmarklifts.co.uk](mailto:info@landmarklifts.co.uk)  
[www.landmarklifts.co.uk](http://www.landmarklifts.co.uk)