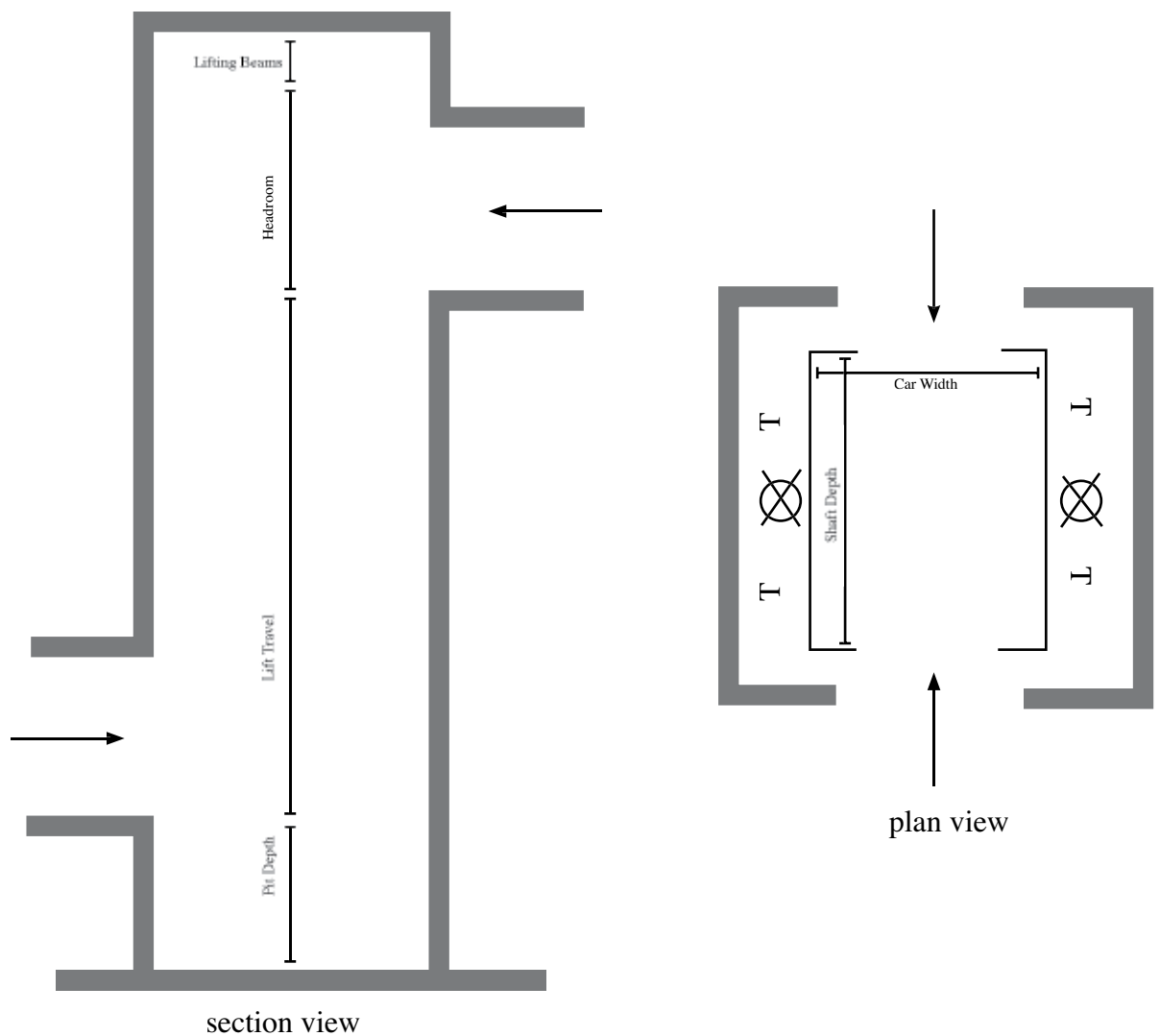




Data - Vehicle Lifts (Open Through)

VEHICLE LIFT (WITH PASSENGERS)



All Vehicle Lifts are individually designed to suit your needs. However, please find 2 working suggestions below.

Vehicle Lift	Suggestion 1	Suggestion 2
Rated Load	4240kgs	4600kgs
Drive System	Hydraulic rams to both side of lift car (suitable for 35 uses per hour)	
Speed	0.2 metre per second	
Car Internal Size	2600mm(w) x 6000mm(d) x 2200mm(h)	2700mm(w) x 6000mm(d) x 2200mm(h)
Configuration	At front and rear	
Shaft Opening	3500mm(w) x 6450mm (d)	3600mm(w) x 6450mm (d)
Headroom	3500mm	
Pit Depth	1300mm	
Entrance Openings	2500m(w) x 2100mm(h)	2600m(w) x 2100mm(h)
Entrance Type	6 panels centrally by parting	
Plant Room	Approx 2250mm(w) x 2250mm(d) x 2250mm(h) per lift	
Standard	EN81 (for all lifts carrying passengers)	
Lift Travel	To suit each specific project	

Landmark Lifts Ltd. 29 Charter Gate, Quarry Park Close, Moulton Park, Northampton NN3 6QB
 t 0800 652 8138 f 01604 495 111 e info@landmarklifts.co.uk w www.landmarklifts.co.uk

Note - all details are correct at time of completion, however, all data maybe subject to change without prior notice. These details cannot form part of a written contract.

ref:vehicledata-08/08